



# COLLEGE PARK MASTER PLAN

A plan to connect people, water, and community



# Walkable Watershed Planning Approach



- Integrates sustainable stormwater management
- Supports recreation opportunities
- Provides safe alternative transportation
- Provides access to natural areas
- Benefits both the watershed and the community's quality of life





# Community & Stakeholder Engagement



City departments, University of Lynchburg and community members provided input



Public Open House at College Park Fall 2021



Survey distributed to neighborhood by City and University of Lynchburg students



## City of Lynchburg Cross-Departmental Stakeholder Group:

- Communications and Public Engagement
- Community Development
- Parks and Recreation
- Public Works
- Water Resources

# College Park Master Plan





# Key Park Features

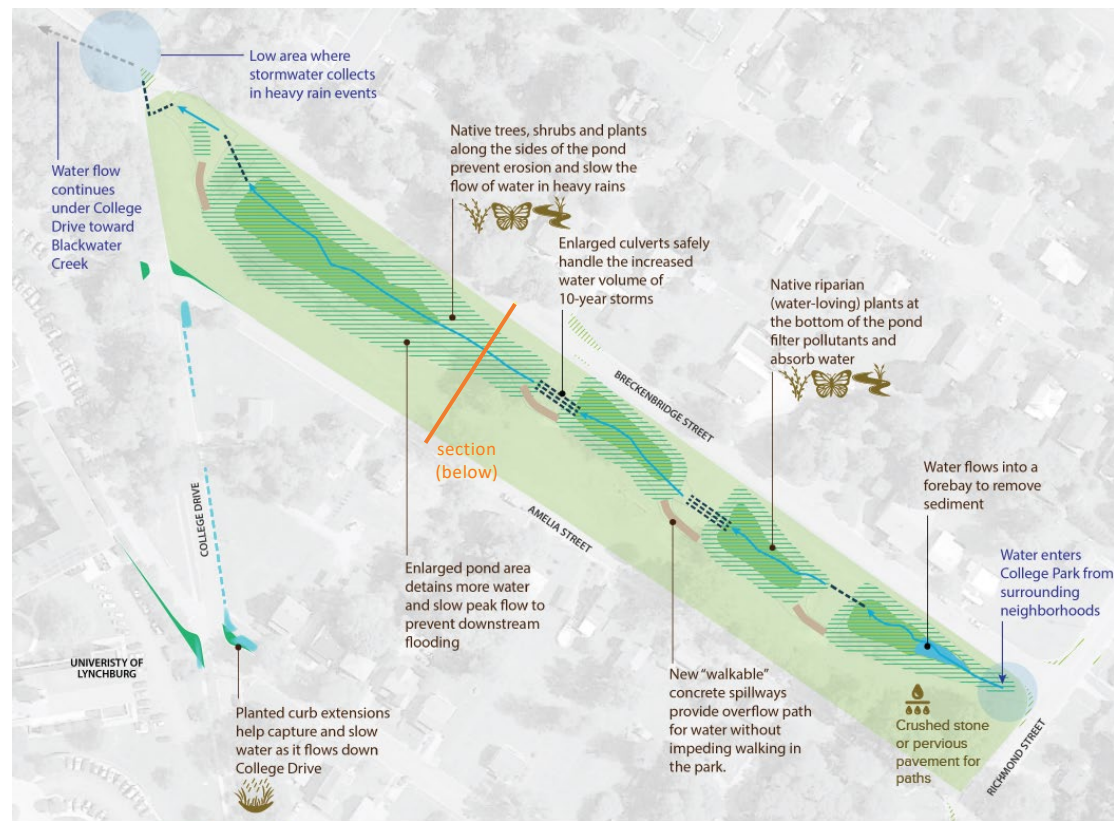
1. Park Loop and Nature Path
2. Stormwater Basins
3. Observation Areas and Overlooks
4. Recreation, Gathering and Play
5. Sustainable Plantings and Maintenance





# Stormwater Management Plan

The proposed design includes sustainable practices and infrastructure improvements to manage the volume, flow, and treatment of stormwater while integrating amenities to improve public spaces and walking safety.



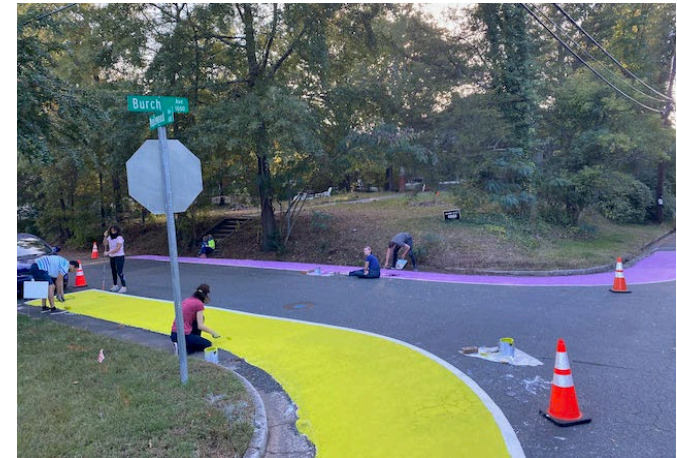
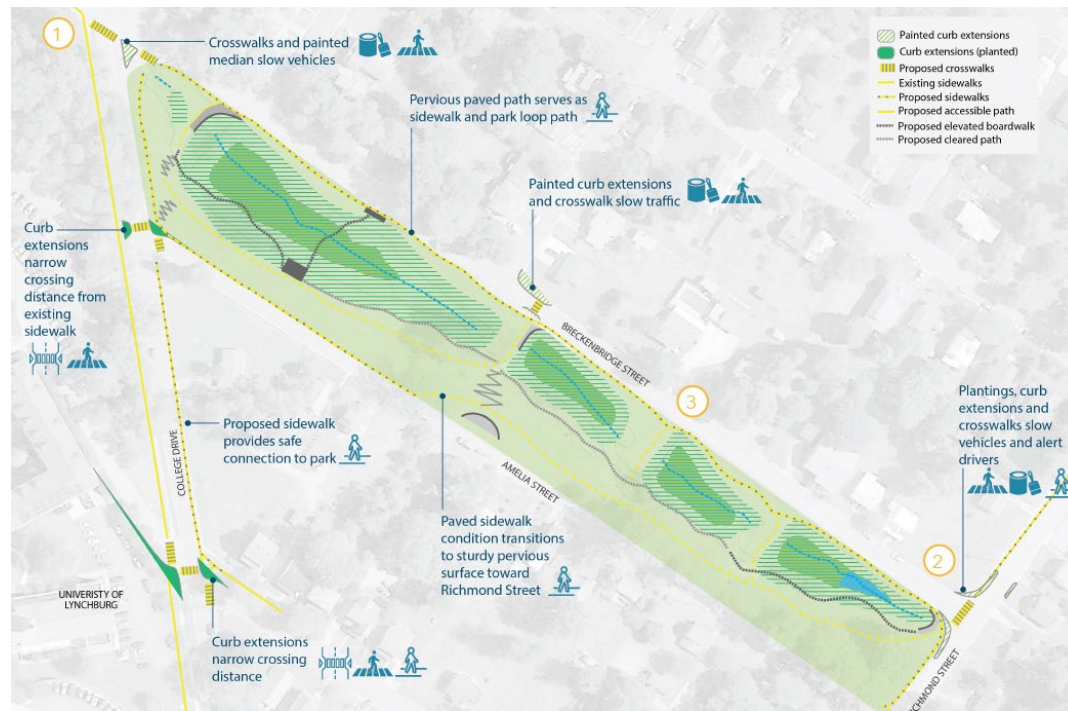
Section illustrating stormwater basin and boardwalk crossing





# Improving College Park Connectivity

The plan integrates features along streets and sidewalks to create safe pedestrian connections to the park and improve walkability within the surrounding neighborhood.







LYNCHBURG  
WATER  
RESOURCES