



# City of Lynchburg Park Deserts



Date: 9/27/2018

### Park Desert - Severity of Need

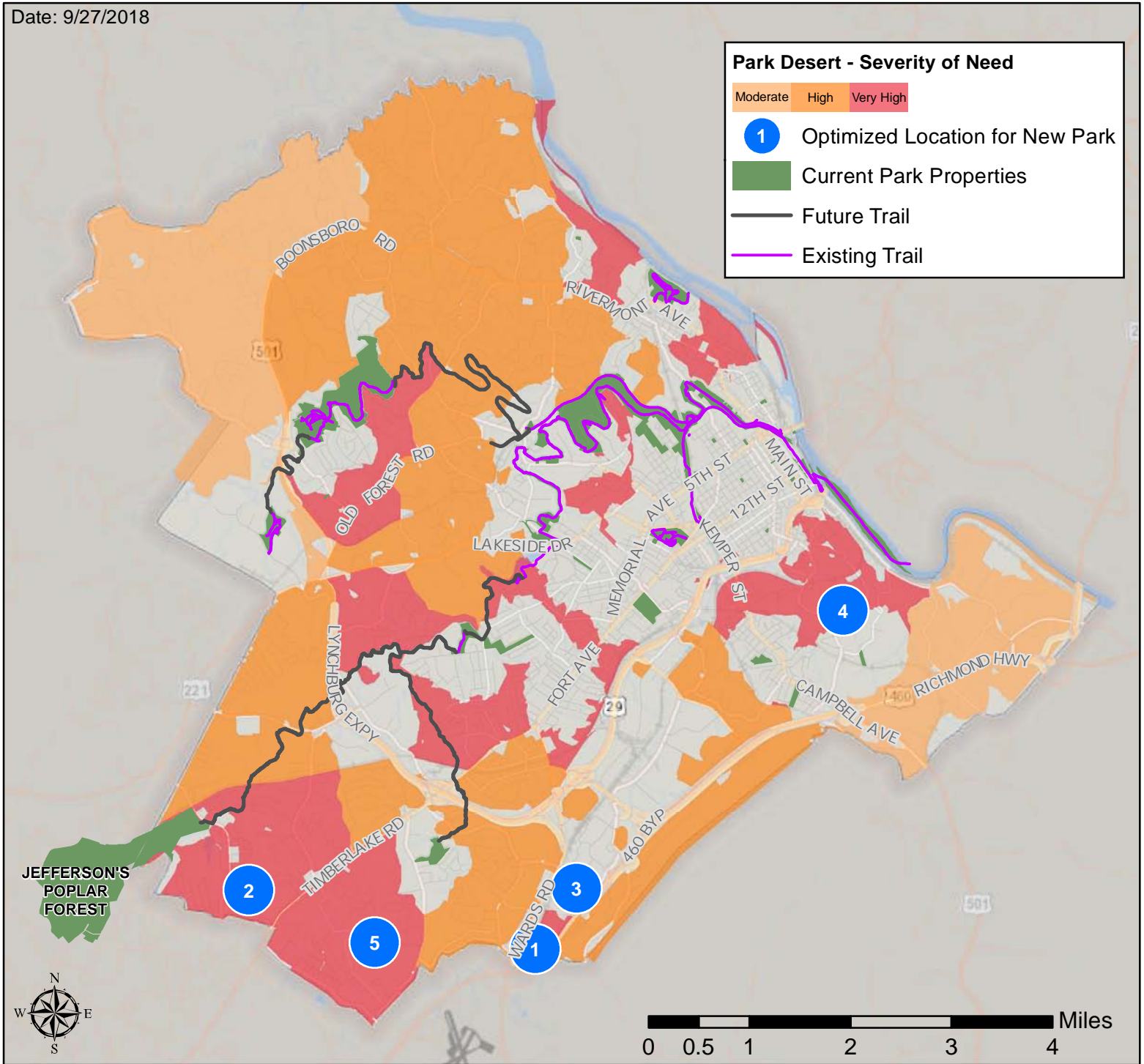
Moderate High Very High

1 Optimized Location for New Park

Current Park Properties

Future Trail

Existing Trail



### Trail Development Phases

- I – Ed Page to Linkhorne Middle School (paved trail) 2018
- II – Peaks View Park to Ivy Creek Park (earthen trail) 2019
- III – Creekside Trail Extension from LC to Sandusky Park (earthen trail) 2021
- IV – Poplar Forest to Heritage Park (paved and earthen) 2023
- V – Sandusky to Poplar Forest (earthen trail) 2025
- VI – Langhorne Trestle to Peaks View Park (earthen trail) 2027
- VII- Heritage to Sandusky (earthen trail) 2028

DISCLAIMER: THIS MAP IS NEITHER A LEGALLY RECORDED MAP NOR A SURVEY AND IS NOT INTENDED TO BE USED AS SUCH. THE INFORMATION DISPLAYED IS A COMPILATION OF RECORDS, INFORMATION, AND DATA OBTAINED FROM VARIOUS SOURCES. THE CITY OF LYNCHBURG IS NOT RESPONSIBLE FOR ITS ACCURACY OR HOW CURRENT IT MAY BE.

Park Desert data provided by the Trust for Public Land.  
<http://www.tpl.org>